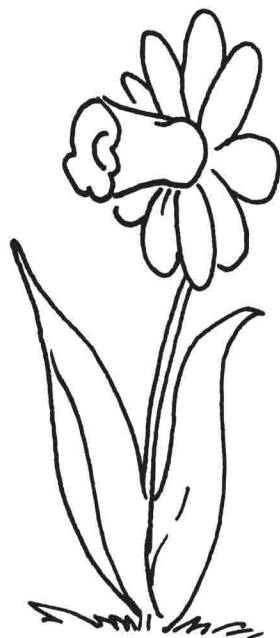
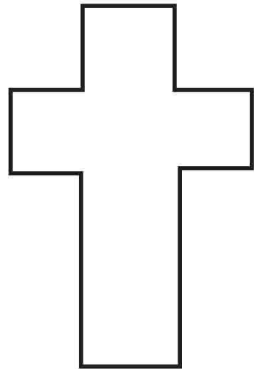
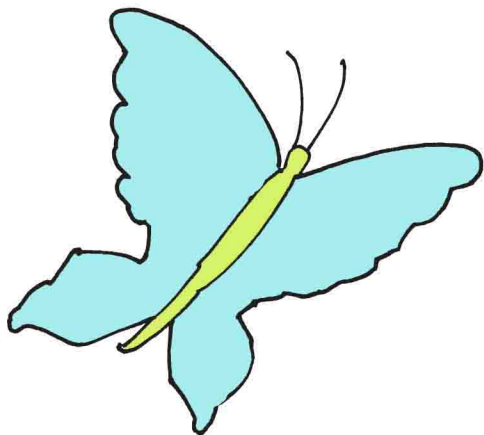
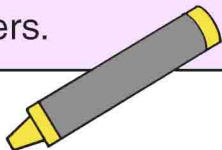


There are many symbols of Easter.
Which do you see in your church?

Color these. Draw some others.



Ages 3+

April 17, 2022 • John 20:1-18

The Empty Tomb

Mary Magdalene went to
Jesus' tomb. It was still dark.

Find these things
hidden in the picture.



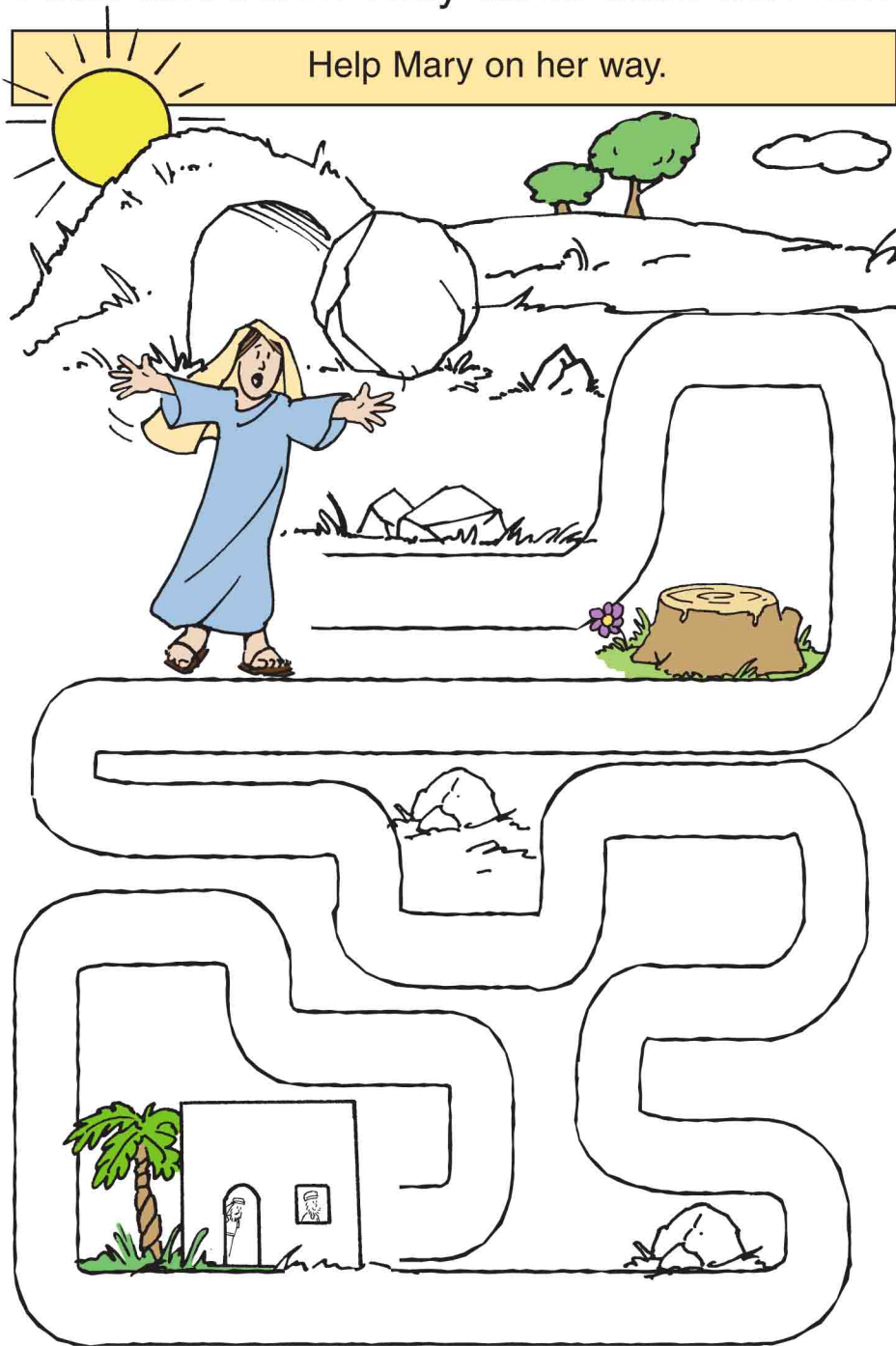
St. Leo's Parish Community
2410 S. Blaine St Grand Island NE
308-382-4753
www.saintleos.org

Enter your **SECRET CODE** to unlock games @
games.childrensbulletins.com

SECRET CODE
HQCT41

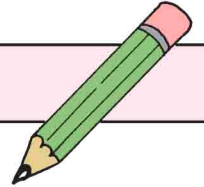
The tomb was empty. Mary ran to get Peter and John. They came back with her.

Help Mary on her way.



Mary cried.
A man asked her why.
Then he said, "Mary."
Who was it?

Trace the letters.



JESUS

Mary was happy then!

